

*EdgeXOS Platform Notes*

# **XRoads** Networks

Edge Network Appliance Platform Notes

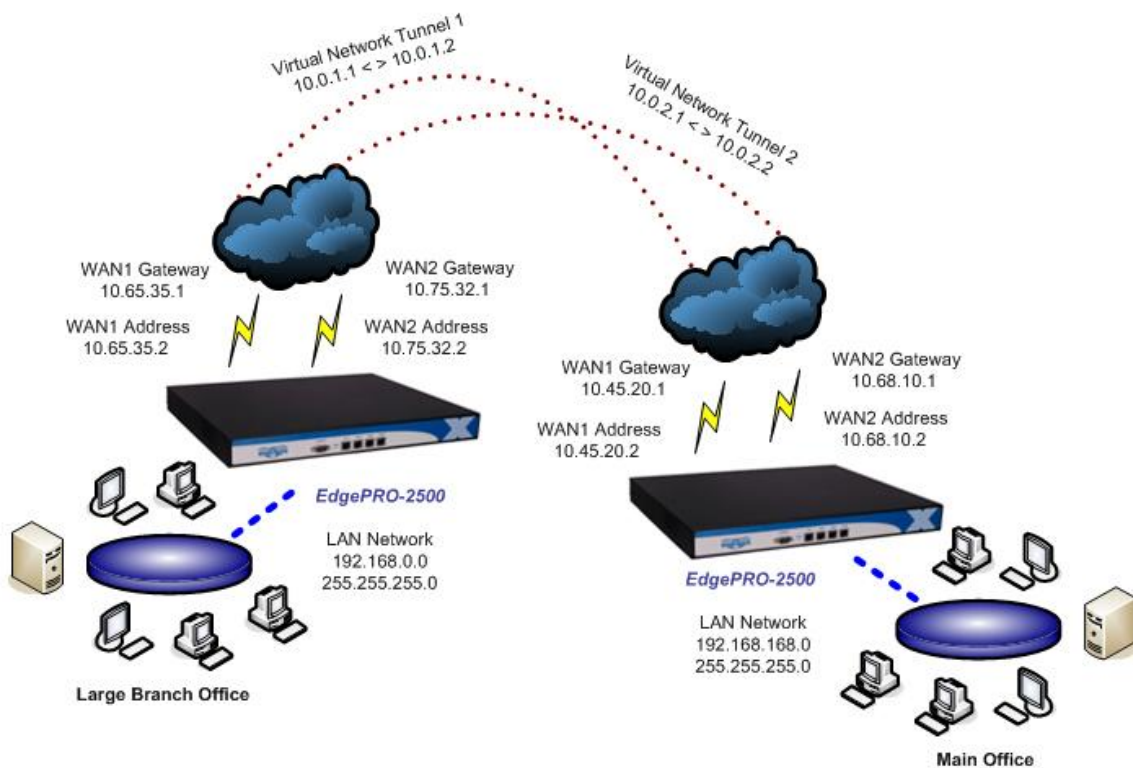
How To Replace Existing VPN Solutions

## Replacing Existing VPN Infrastructure

This document provides a brief overview of how you can easily improve your existing site-to-site infrastructure by replacing your IPsec tunneling solution with our Site2Site tunnels. These tunnels are based on SSL instead of IPsec and can be implemented across two or more WAN links for faster throughput and resiliency.

**Overview:** The Site2Site tunnels allow for the connection of multiple site-to-site tunnels. These tunnels can provide increased throughput between sites and automated failover in the event of a network outage. In order to utilize these tunnels you need to have an EdgeXOS appliance at each site and you need to remove your existing IPsec tunnel infrastructure (but does not require the removal of existing firewalls).

**NOTE:** IPsec cannot be used in conjunction with the Site2Site tunnels as the resulting overhead would actually eliminate any advantages provided by this solution. Thus you should not use your existing VPN infrastructure if implementing our Site2Site tunnels.



The network diagram above is an example of how the Site2Site tunnels can be configured to provide improved end-to-end throughput and redundancy.

The Site2Site tunnels provide complete Layer-3 connectivity between two or more remote offices and do not require that you remove your existing firewall protection, just disable any existing IPsec VPN and route the Site2Site tunnel traffic to each firewall. An XRoads Networks engineer can demonstrate this process during installation.