

*Example Guide*

# **XRoads** Networks

Edge Network Appliance Example Guide:  
Configuring WAN1



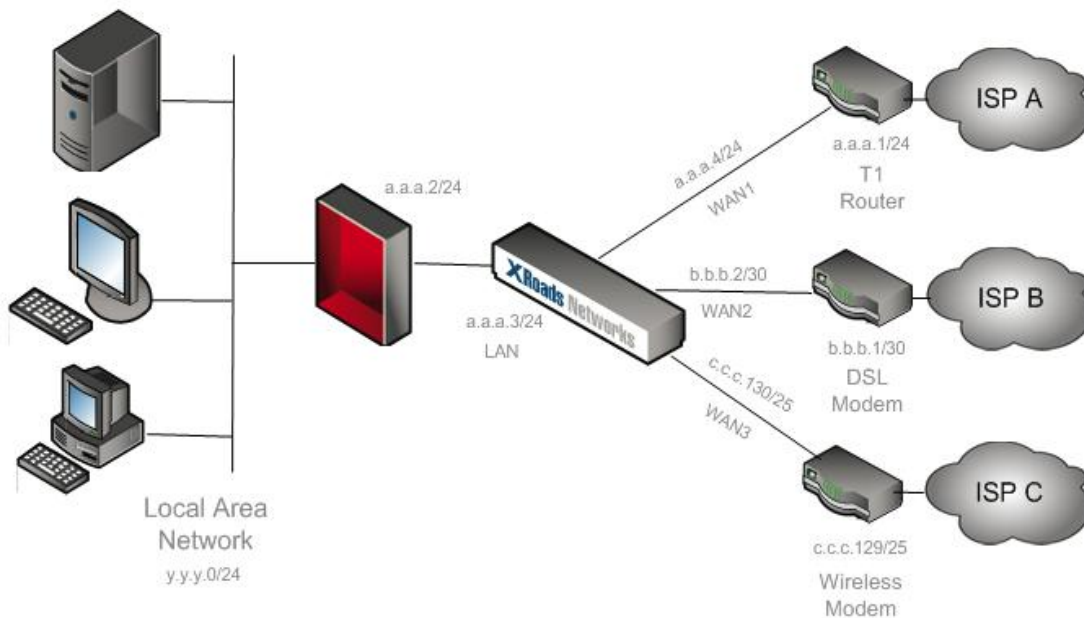
With either mode other WAN interfaces will be placed in NAT mode when connecting to the Internet. All other WAN interfaces will NAT outbound traffic to the primary IP address of that WAN interface unless there is a specific NAT rule for that interfaces which forces a specific LAN side address to be NAT'd to a secondary address on that particular WAN link.

## Example Configuration Modes

Both bridge and NAT mode have advantages and disadvantages. If you already have a number of public IP addresses, and you have a local router as your gateway, typically bridge mode makes the most sense. The advantage to bridge mode is that it is very easy to install and requires no network IP address changes. A drawback to bridge mode is that only the network defined in the WAN1 interface can be effected by the EdgeXOS appliance, if you have multiple networks you will have to define a large subnet which encompasses those networks or use NAT mode. Route mode is the fallback mode if neither bridge nor NAT mode will work.

## Bridge Mode

This mode is easy to configure and provides transparent network pass-through for the existing WAN1 connection. Make sure WAN1 is plugged directly into the WAN1 gateway device, i.e. the gateway routers LAN port, or the firewalls LAN interface.



## NAT Mode

This mode is designed to be used when you only have a small number of public addresses, or when the EdgeXOS appliance will take over for an existing firewall.

