

*Example Guide*

# **XRoads** Networks

Edge Network Appliance Example Guide:  
Configuring WAN1

# Best Practices for Configuring The WAN1 Interface

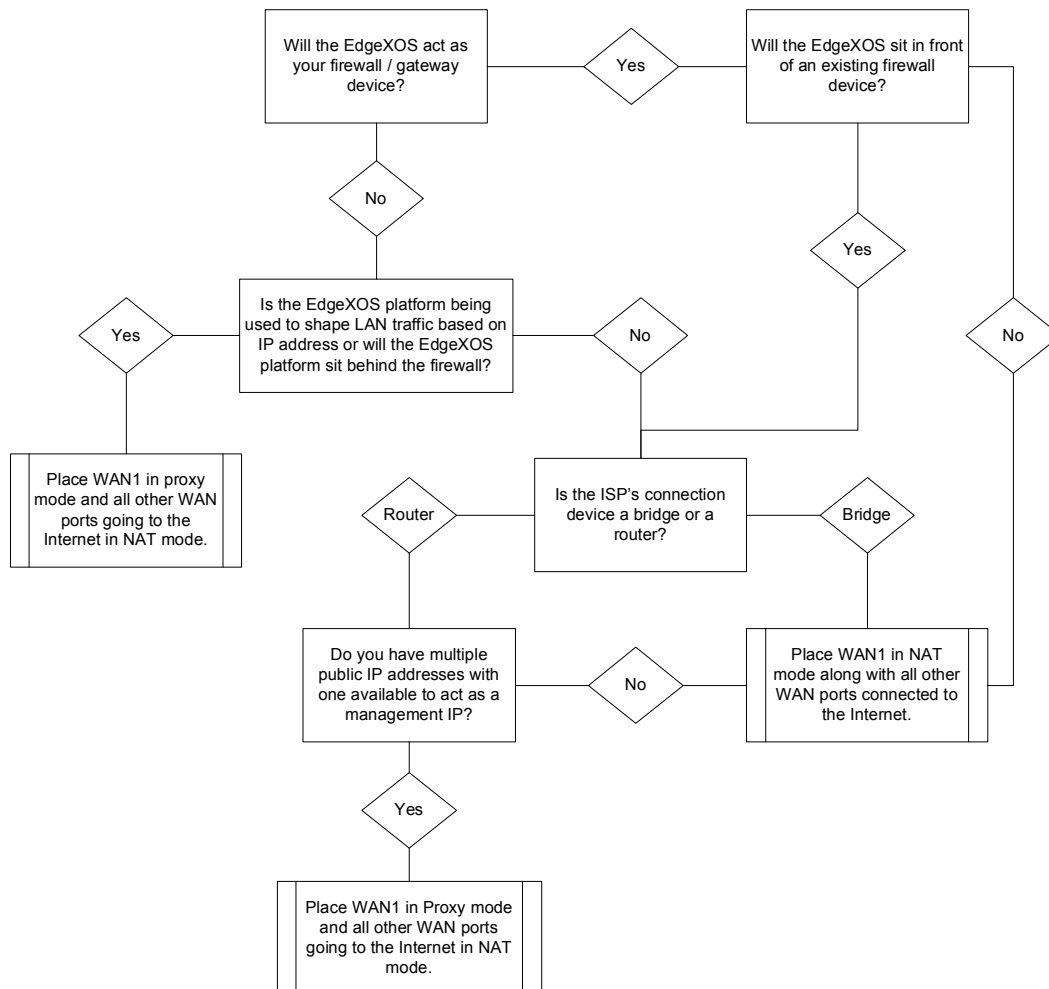
This document should be used to determine how your EdgeXOS platform should be installed. The EdgeXOS platform is designed to be highly flexible and can be deployed in many different network environments. For this reason the initial installation process might be a bit more complicated than some devices, however by using this document you can easily determine the right method for your deployment.

## Installation Method (Decision Tree)

Using this flow chart, follow each step to determine how your primary WAN1 connection will be configured. The two primary methods used are NAT and proxy mode.

When NAT mode is used, all traffic going out WAN1 will be NAT'd to the primary WAN1 address, unless there is another NAT rule which specifically NAT's a specific address to a secondary address assigned to the WAN1 interface.

When proxy mode is used, all WAN1 traffic passes through the appliance with no additional network or IP address changes required. This is a common deployment scenario when the customer has a pre-existing network connection with multiple public addresses assigned to either a firewall or gateway device.



With either mode other WAN interfaces will be placed in NAT mode when connecting to the Internet. All other WAN interfaces will NAT outbound traffic to the primary IP address

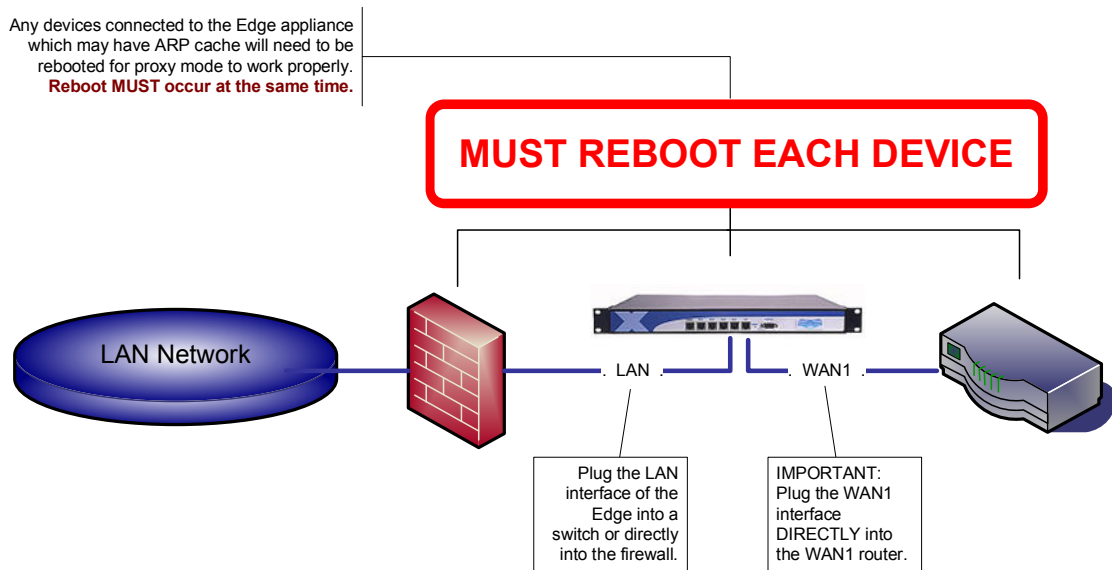
of that WAN interface unless there is a specific NAT rule for that interfaces which forces a specific LAN side address to be NAT'd to a secondary address on that particular WAN link.

## Example Configuration Modes

Both proxy and NAT mode have advantages and disadvantages. If you already have a number of public IP addresses, and you have a local router as your gateway, typically proxy mode makes the most sense. The advantage to proxy mode is that it is very easy to install and requires no network IP address changes. A drawback to proxy mode is that when a link failure occurs it takes longer (up to several hours in some cases) for the link to be reset.

### Proxy Mode

This mode is easy to configure and provides transparent network pass-through for the existing WAN1 connection. Make sure WAN1 is plugged directly into the WAN1 gateway device, i.e. the gateway routers LAN port, or the firewalls LAN interface.



### NAT Mode

This mode is designed to be used when you only have a small number of public addresses, or when the EdgeXOS appliance will take over for an existing firewall.

